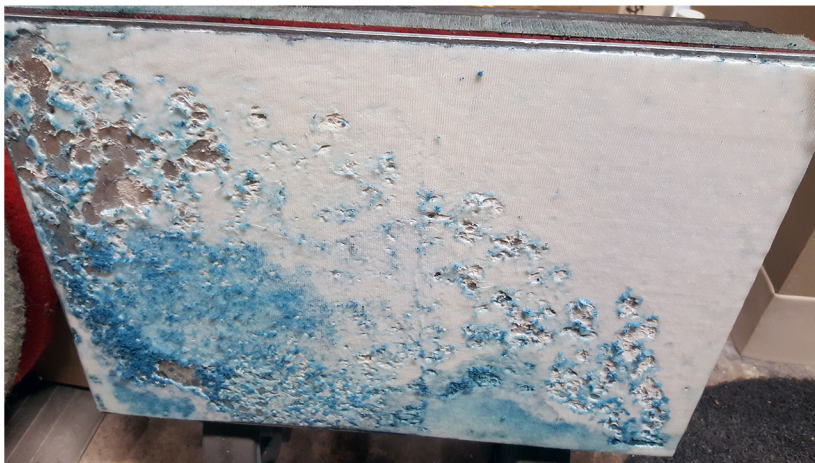


As you begin to look towards summer and plan for the cleaning projects that you will need your Square Scrub Pivot to perform, you should make certain your machines are in top working order. Here are four items you should check on your Pivot so you are ready to go this summer.

The grip face is an item that does need to be replaced periodically since the hooks will eventually wear out. Water and detergents can begin to work around the edges and separate it from the drive plate. When this happens, the pad will not stay in place properly.



What you need to do: Visually check the grip face to ensure it is in good condition.

Pivot 20 Grip Face - SS 142003V

Pivot 28 Grip Face - SS 142803V

Video: [Grip Face Replacement](#)

Download PDF: [Grip Face Replacement Guide](#)

Download PDF: [Grip Face Care](#)



Grip Face Video



Grip Face Replacement PDF



Grip Face Care PDF



The isolators between the drive plate and the deck are wear items, which we recommend replacing yearly, regardless of how they look. Lay the Pivot on it's back and shine a flashlight into the gap between the drive plate and stainless steel deck to inspect the isolators. If you see any broken isolators, replace them immediately before using the Pivot.

What you need to do: Inspect the isolators and order replacements if they are more than a year old.

Pivot 20 Isolator Kit - SS 142001PVT
 Pivot 28 Isolator Kit - SS 142801PVT
 Video: [Isolator Replacement](#)
 Download PDF: [Isolator Replacement](#)

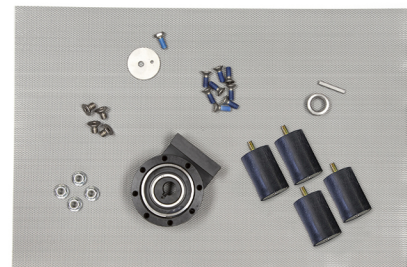


Isolator Video



Isolator PDF

The bearing assembly is the heart of the Pivot and you will need to check to make certain it's in good condition. If there is an issue, don't worry! Our bearing assembly has a 5-year warranty!



What you need to do: Run the Pivot and listen for excessive noise.

Pivot 20 Bearing/Eccentric Kit - SS 14200SEAL
 Pivot 28 Bearing/Eccentric Kit - SS 14280SEAL
 Video: [Bearing Assembly and Base Plate Replacement](#)
 Download PDF: [Bearing Assembly and Base Plate Replacement](#)



Eccentric Video



Eccentric PDF



The power cord is the final item to inspect. Look for cuts, kinks, or exposed wiring and replace the cord if any of these are found.

What you need to do: Inspect the cord and do not use the Pivot if it is in a dangerous condition.

Pivot 20 or 28 Power Cord - SS 01014Z